



PO BOX 54 HAMILTON NSW 2303
140 DENISON STREET CARRINGTON NSW 2294
PH: 02 49615 777 FAX: 02 49696 246
EMAIL: newcastleminicranes@bigpond.com
ABN: 23 466 091 441

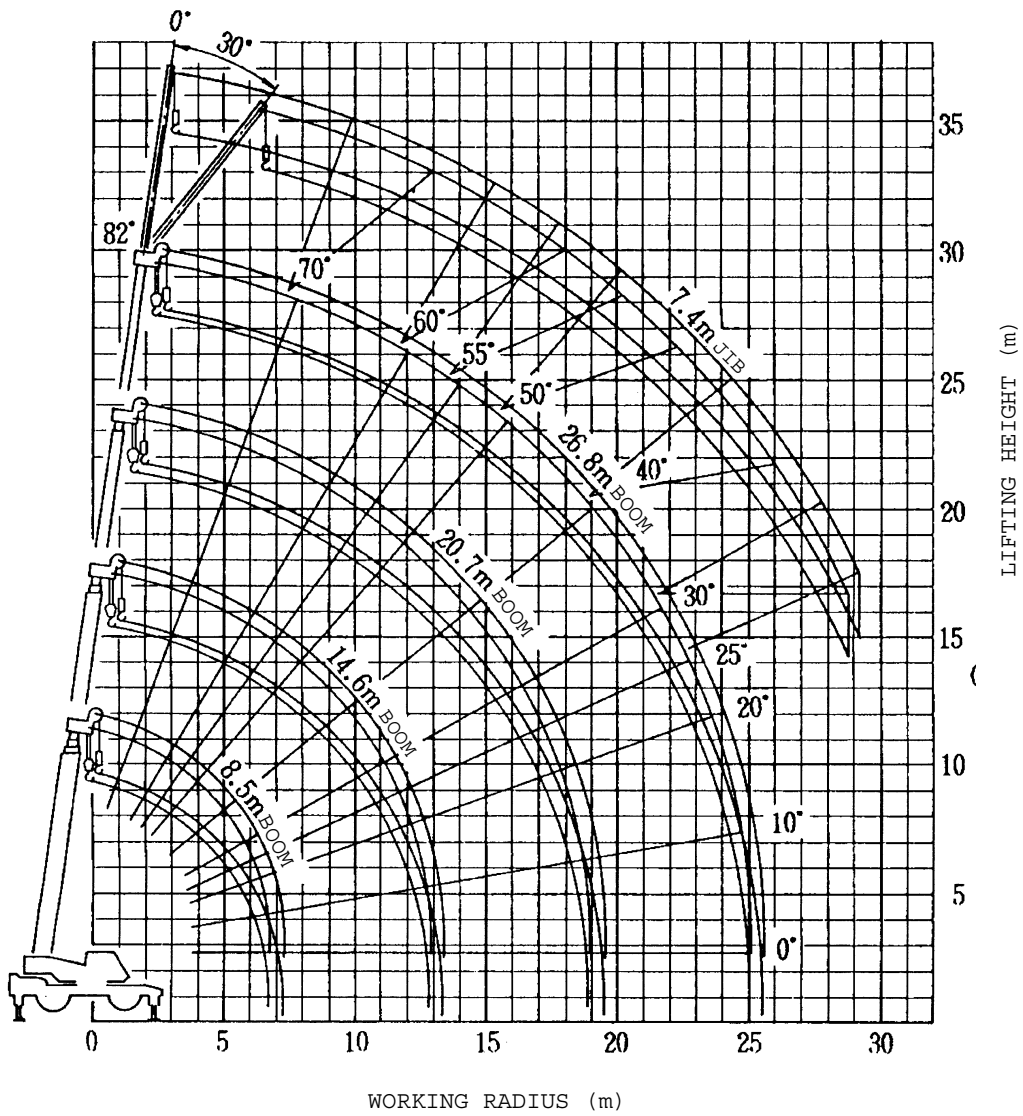
TADANO TR200M-4



Specifications

Length: 10470mm
Width: 2500mm
Height: 3420mm
Weight: 24000kg

WORKING RADIUS - LIFTING HEIGHT



NOTES:

1. The deflection of the boom is not incorporated in the figure above.
2. The figure above is for the case where the outriggers are fully extended (360°).

TOTAL RATED LOADS

(1) With outriggers set
(i)

Unit: ton

Outriggers fully extended								-360 °-	
B \ A	8.5m	14.6m	20.7m	26.8m		7.4m			
						0 °	30 °		
2.5m	20.0	16.0	9.0		82	3.0	2.0		
3.0m	20.0	16.0	9.0		75	3.0	2.0		
3.5m	20.0	16.0	9.0	6.8	70	3.0	2.0		
4.0m	18.5	15.5	9.0	6.8	65	2.6	1.85		
4.5m	16.5	14.3	9.0	6.8	60	2.2	1.7		
5.0m	15.0	13.2	9.0	6.8	55	1.8	1.55		
5.5m	13.7	12.2	9.0	6.8	50	1.4	1.25		
6.0m	12.5	11.4	9.0	6.8	45	1.05	1.0		
6.5m	11.5	10.6	8.5	6.8	40	0.85	0.8		
7.0m		9.9	8.1	6.8	35	0.7	0.65		
8.0m		8.0	7.3	6.15	30	0.55	0.55		
9.0m		6.5	6.5	5.55	25	0.45			
10.0m		5.45	5.65	5.05					
11.0m		4.55	4.8	4.65					
12.0m		3.8	4.15	4.25					
13.0m			3.6	3.8					
14.0m			3.15	3.25					
15.0m			2.75	2.8					
16.0m			2.4	2.5					
17.0m			2.1	2.25					
18.0m			1.85	2.0					
19.0m				1.75					
20.0m				1.55					
22.0m				1.2					
24.0m				0.9					
25.0m				0.8					

A= Boom length
B= Working radius
C= Jib length
D= Jib offset
E= Boom angle